

Fiber Internet for the Home

- The BEST all-weather broadband connection for your home
- Consistent, reliable internet with symmetrical speed to stream, game and work from home
- Internet without limits— no data caps, overage fees, or speed reductions
- Fast, friendly support from people who live and work in northeastern South Dakota



50_{Mb}/50_{Mb}

\$89*
per month

Light Users
Email + Surf the Web

NO DATA CAPS!

Network Management

Basic Wi-Fi

100_{Mb}/100_{Mb}

\$99*
per month

Average Users
Email + Surf the Web
Some Streaming

NO DATA CAPS!

Network Management

PREMIUM WI-FI with BLAST
\$4.99/mo.

Basic Wi-Fi

250_{Mb}/250_{Mb}

\$139*
per month

Multiple Average Users
Work Remote
Streaming & Gaming

NO DATA CAPS!

Network Management

The Ultimate Wi-Fi Experience!
Premium Wi-Fi
with BLAST

Whole Home Managed
Wi-Fi included

500_{Mb}/500_{Mb}

\$169*
per month

Heavy Users
Work Remote
Streaming & Gaming
Smart Home

NO DATA CAPS!

Network Management

The Ultimate Wi-Fi Experience!
Premium Wi-Fi
with BLAST

Whole Home Managed
Wi-Fi included

Whole Home Managed Wi-Fi - \$7.99/month

Maximize your Wi-Fi potential while maintaining your mobility around your home, **Whole Home Managed Wi-Fi** offers you just that. Wi-Fi optimization and interference mitigation of your home's ever-changing Wi-Fi environment. To learn more, refer to **Helping Manage Your Home Wi-Fi** on the back of this brochure.

Internet Protection Plan - \$3/month

Assurance in knowing that "help without a service call fee" is just a call away with: troubleshooting assistance, replacement of RC-owned equipment and some in-home wiring. Not all technician visits are covered. Accounts not enrolled in a **Protection Plan** are subject to a service call fee.

Service Call \$85, After hours \$110

Network Management - Included

A pro-active system which provides diagnostics and alerts to sudden changes in a network.

Voice Services

Digital Voice - \$5/month

Digital Voice is a voice-over-internet protocol (VoIP) alternative to having a landline phone, it offers the same calling features as a landline at a fraction of the price. Calling features include...**Voice Mail, Voice Mail to Email, Voice Mail to Text, Caller ID and Call Waiting.** Plus, Digital Voice **includes Unlimited Long Distance** within the continental U.S. In the case of power outage when internet is down, **Call Forward Internet Down** will forward calls from your home number to cell phone number. City and state taxes, hearing impaired and 911 charges will apply.

Landline Phone \$35/month

Traditional landline phone with the same calling features as listed above, with the *exception of Call Forward Internet Down*. Long Distance calls are additional charges and will be billed to your account. City and state taxes, hearing impaired, FUSC (varies quarterly) and 911 charges will apply.

Phone Protection Plan - \$1/month Customers may choose to disconnect any voice service at anytime.

*A one-time installation fee of \$25 service and/or wiring fee will apply.

Take Home Network Performance
and Control To Another Level

GigaSpire **BLAST** 6

CommandIQ™ | ExperienceIQ™ | ProtectIQ™



GigaSpire BLAST 6 is the next-generation smart home system and offers the ultimate Wi-Fi experience for online activities and those bandwidth-hungry applications. Speed and coverage is just the beginning of the thing GigaSpire BLAST 6 can do, it's equipped latest wi-fi technology, Wi-Fi 6.



CommandIQ™



CommandIQ™ works with the BLAST giving you instant snapshot of your home network and control. Through the app you can view your network, set up parental controls, or a guest network, run speed tests, change your network name and password, and more. **CommandIQ™** puts you in charge!

ProtectIQ™ provides protection against viruses, malware, and malicious websites, keeping your network and devices safe from cyberattacks.

ExperienceIQ™ provides you with the tools needed to enforce the Internet rules you've established for your home. Set up profiles for your children or devices, filter content, websites, and applications, and set appropriate time limits.

ExperienceIQ™ and **ProtectIQ™** are premium suites giving you the ultimate control for \$5.95/month/app.

Helping You
Manage Your
Home Wi-Fi
for the
Best Online
Experience



Wi-Fi connectivity is a crucial part of today's world. People often underestimate the number of devices they have connected to Wi-Fi until they have an issue with a device or find out they have outgrown their network slowing things down.

Your Home Wi-Fi network is its own ecosystem. It is constantly changing and growing.

Many of us have or will:

- Replace/upgrade devices using Wi-Fi
- Add a new device to their home Wi-Fi and/or are working toward a Smart Home
- Have guests' devices connect to your Wi-Fi
- Use Wi-Fi for a streaming device
- Use Wi-Fi for a gaming console
- Own an older device sluggishly trying to update software (i.e. any device 3-4 years or older)
- Own a wireless device acting like a router causing interference (i.e. some printers)
- Run several electronic devices simultaneously
- Encounter interference from a home's structure (plaster walls, mirrors, etc.) and/or miscellaneous items (i.e. appliances, foil balloons, etc.)

The Benefits

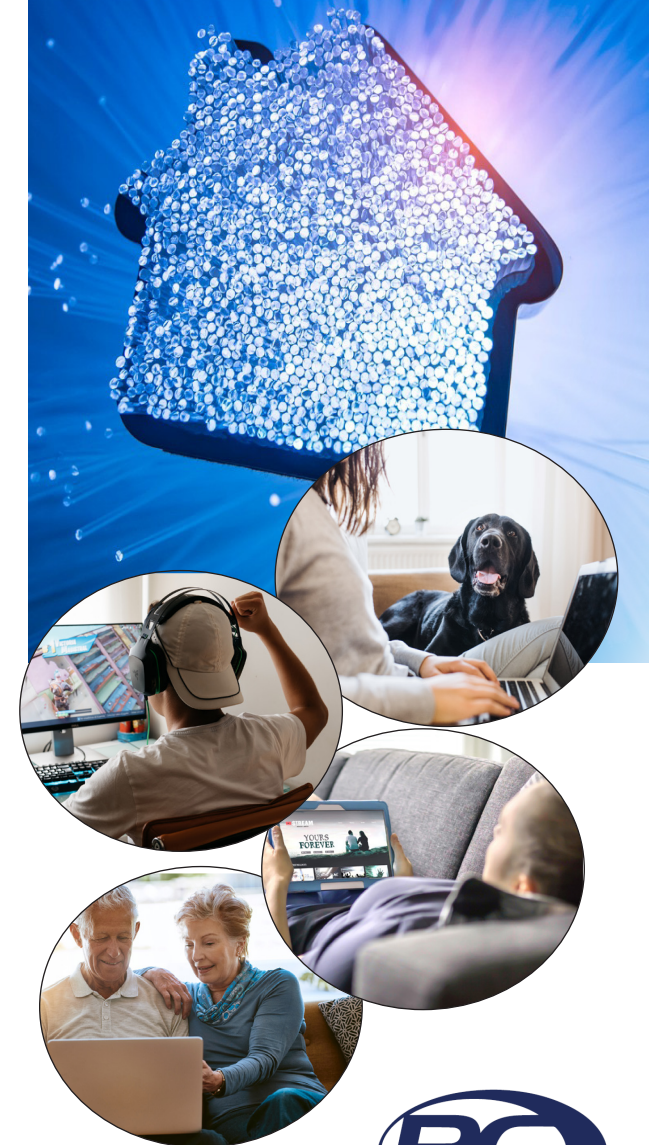
- Optimal Wi-Fi in your home's ever-changing digital environment
- Extended Wi-Fi coverage in far-reaching rooms or areas of your home
- Wi-Fi solution to overcome a home's structural challenges
- Remote Wi-Fi management
- Systemic interference mitigation

Whole Home Manage Wi-Fi

Included in some packages | \$7.99/month à la carte

RCFiberInt2020

Fiber Internet for the Home



205 Main Street
PO Box 197
New Effington, SD 57255
605.637.5211 | www.tnics.com

